

IPF COLASIT PLASTIC FANS

• Corrosion Resistant • No Metal in the Air Stream • Fire Retardant PPs

Direct Drive/Belt-Drive
Medium-Pressure Radial Fans

Advantages of IPF Fans

- Solid polypropylene impeller
- Quality Swiss craftsmanship and proven technology
- Reliability and long life
- Highly efficient means lower operation costs
- ISO 9001
- Low noise level



Specifications *CMV125 to CMV400*

Size range	Intake/exhaust diameter 5" to 16"	Other features	Sleeved inlet and outlet
Performance	Flow rate to 7,500 CFM 10 in. w.g. maximum fan static pressure 75% efficiency		Housing drain Weather cover Optional hub seals available for specific applications
Radial impeller	Single-width centrifugal fan Clockwise or counterclockwise rotation 20 forward-curved streamlined blades Injection-molded in fire-retardant polypropylene or PVDF No metal in the air stream Dynamic and statically balanced	Support frame	Powder-coated sheet metal or optional stainless-steel fan support and motorplate
Fan housing	Self-supporting thermoformed and mechanically welded PVC, PPs (fire-retardant) and PVDF No exposed metal parts	Belt drive	Nonstatic and oil resistant V-belt Cast-iron pulleys, adjustable pulleys available Adjustment for tensioning and belt replacement
Bearings and shaft	Two permanently lubricated flange bearings and a rubberized sleeve enclosed in an injection-molded fiberglass case Carbon-steel shaft	Motor	Drives factory set to specified RPM Three phase or single phase Totally enclosed and fan cooled NEMA mounting Other motors available



IPF COLASIT PLASTIC FANS

• Corrosion Resistant • No Metal in the Air Stream • Fire Retardant PPs

To select the appropriate fan for your application, use the performance tables to locate the model that provides the CFM required at the static pressure specified. For highest efficiency, select the fan size that will handle the required capacity and pressure with the lowest horsepower motor. Please note that BHP is the fan horsepower and does not include an approximate 15% loss for drives systems.

Model CMV 315 Performance Table

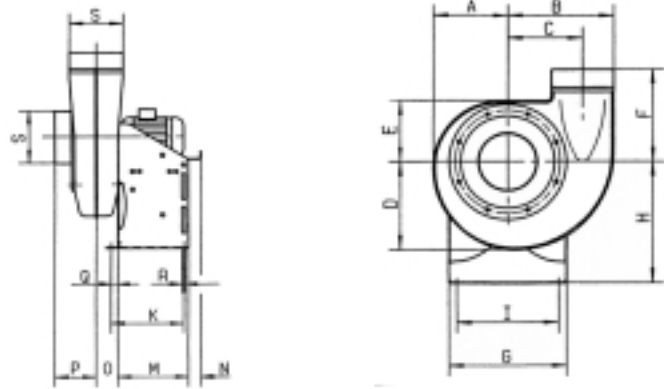
FAN STATIC PRESSURE (inches water gauge)

Volume CFM	Outlet Velocity	1		2		3		4		5		6		7		8		9		10	
		rpm	bhp	rpm	bhp	rpm	bhp	rpm	bhp	rpm	bhp	rpm	bhp	rpm	bhp	rpm	bhp	rpm	bhp	rpm	bh
1000	1190	757	0.271	1028	0.529	1249	0.813	1440	1.116	1610	1.434	1766	1.769	1911	2.119	2046	2.480	2173	2.853	2294	3.238
1250	1490	797	0.363	1050	0.664	1261	0.992	1445	1.338	1611	1.702	1763	2.080	1905	2.474	2037	2.878	2163	3.298	2282	3.726
1500	1790	847	0.479	1083	0.824	1283	1.194	1460	1.585	1621	1.993	1769	2.416	1907	2.853	2037	3.303	2160	3.765	2277	4.238
1750	2085	906	0.627	1124	1.012	1314	1.426	1483	1.859	1638	2.310	1782	2.778	1917	3.261	2043	3.752	2164	4.260	2279	4.779
2000	2385	970	0.808	1173	1.236	1352	1.691	1514	2.167	1663	2.661	1802	3.172	1933	3.699	2056	4.234	2174	4.786	2286	5.345
2250	2680	1039	1.031	1227	1.497	1397	1.996	1551	2.513	1695	3.053	1829	3.606	1956	4.177	2076	4.758	2190	5.348	2300	5.954
2500	2980	1111	1.297	1287	1.805	1447	2.344	1594	2.903	1732	3.485	1861	4.080	1984	4.694	2101	5.321	2212	5.955		
2750	3280	1186	1.613	1351	2.163	1502	2.742	1643	3.347	1775	3.970	1899	4.606	2018	5.263	2131	5.930	2239	6.608		
3000	3575	1264	1.986	1418	2.575	1561	3.195	1695	3.839	1822	4.506	1942	5.187	2056	5.881	2166	6.594	2271	7.315		
3250	3875	1343	2.417	1488	3.047	1624	3.710	1752	4.396	1873	5.100	1989	5.826	2099	6.562	2205	7.313				
3500	4170			1561	3.587	1690	4.290	1812	5.016	1928	5.761	2039	6.525	2146	7.307	2249	8.104				
3750	4470			1636	4.198	1758	4.937	1875	5.706	1986	6.491	2093	7.296	2196	8.118	2296	8.959				
4000	4770			1712	4.879	1829	5.664	1940	6.468	2047	7.296	2150	8.142	2250	9.010						
4250	5065			1790	5.643	1901	6.465	2008	7.314	2111	8.185	2210	9.070								

MODEL CMV 315

Mechanical Specifications

Wheel diameter	19.69"
Tip speed	rpm x 5.154 = ft/min.
Maximum rpm	2300
Inlet/outlet diameter	12.40" I.D.
Inlet/outlet area	0.839 ft ²
Fan weight (w/o motor)	77 lb.



Dimensions (inches) Direct Drive/Belt Driven

CMV	A	B	C	D	E	F	G	H	I	K	L	M	O	P	Q	R	S
125	6.75	9.5	6.5	8	6	9	10.75	11	9	8.25	18	8	2.13	4.38	.75	.31	5
140	7.5	10.5	7.13	8.75	6.5	9.63	11.5	11.88	10	8.5	18.25	8.25	2.25	4.63	.75	.31	5.5
160	8.38	11.75	8.13	10	7	10.25	12.75	13.13	11	8.88	18.63	8.25	2.25	4.88	.75	.38	6.25
180	9.25	13.25	9	11	7.88	11.25	14	14.75	12.5	8.88	19.75	8.625	2.875	5.5	.75	.38	7
200	10.75	14.5	10	12.25	8.63	12.38	15.63	15.75	13.75	10.5	21.75	10.25	3.25	6.25	.75	.38	7.88
225	11.38	16.25	11.25	13.63	9.5	13.38	17.63	17.75	15.38	11.5	25.13	10.75	3.63	7.13	1.25	.5	8.88
250	12.5	17.88	12.5	15	10.5	14.5	19.5	19.63	17.13	11.5	29	10.75	4.13	7.88	1.25	.5	9.88
280	13.75	19.75	13.63	16.5	11.5	16	21.5	22	19	11.63	26	11.25	4.5	8.88	1.25	.5	11
315	15.5	22.25	15.63	18.63	13	17.75	24.13	24.88	21.5	13.25	26.5	12.75	5.25	9.88	1.25	.5	12.5
400	17.5	25.75	17.38	21.25	14.5	18.5	27	28	24.38	14.5	31.38	14.25	6.38	12.38	1.25	.5	15.75



Industrial Plastic Fan

134 Water Street Wakefield, MA 01880 USA t. 781.246.9444 f. 781.246.9423 www.ipfcolasit.com