

# IPF COLASIT PLASTIC FANS

• Corrosion Resistant • No Metal in the Air Stream • Fire Retardant PPs

Direct Drive/Belt-Drive  
Medium-Pressure Radial Fans

## Advantages of IPF Fans

- Solid polypropylene impeller
- Quality Swiss craftsmanship and proven technology
- Reliability and long life
- Highly efficient means lower operation costs
- ISO 9001
- Low noise level



## Specifications *CMV125 to CMV400*

Size range	Intake/exhaust diameter 5" to 16"	Other features	Sleeved inlet and outlet
Performance	Flow rate to 7,500 CFM 10 in. w.g. maximum fan static pressure 75% efficiency		Housing drain Weather cover Optional hub seals available for specific applications
Radial impeller	Single-width centrifugal fan Clockwise or counterclockwise rotation 20 forward-curved streamlined blades Injection-molded in fire-retardant polypropylene or PVDF No metal in the air stream Dynamic and statically balanced	Support frame	Powder-coated sheet metal or optional stainless-steel fan support and motorplate
Fan housing	Self-supporting thermoformed and mechanically welded PVC, PPs (fire-retardant) and PVDF No exposed metal parts	Belt drive	Nonstatic and oil resistant V-belt Cast-iron pulleys, adjustable pulleys available Adjustment for tensioning and belt replacement
Bearings and shaft	Two permanently lubricated flange bearings and a rubberized sleeve enclosed in an injection-molded fiberglass case Carbon-steel shaft	Motor	Drives factory set to specified RPM Three phase or single phase Totally enclosed and fan cooled NEMA mounting Other motors available



# IPF COLASIT PLASTIC FANS

• Corrosion Resistant • No Metal in the Air Stream • Fire Retardant PPs

To select the appropriate fan for your application, use the performance tables to locate the model that provides the CFM required at the static pressure specified. For highest efficiency, select the fan size that will handle the required capacity and pressure with the lowest horsepower motor. Please note that BHP is the fan horsepower and does not include an approximate 15% loss for drives systems.

## Model CMV 280 Performance Table

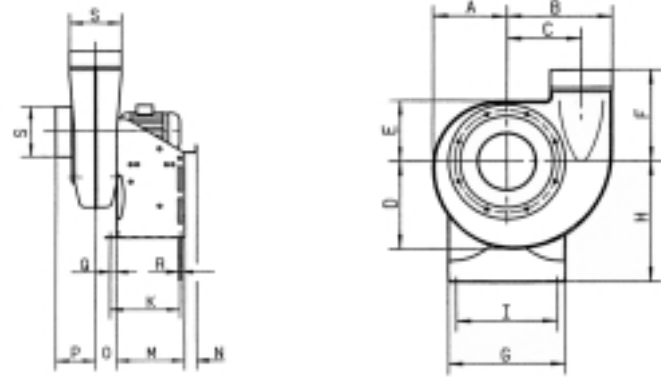
### FAN STATIC PRESSURE (inches water gauge)

Volume CFM	Outlet Velocity	1		2		3		4		5		6		7		8		9		10	
		rpm	bhp	rpm	bhp	rpm	bhp	rpm	bhp	rpm	bhp	rpm	bhp	rpm	bhp	rpm	bhp	rpm	bhp	rpm	bhp
800	1205	839	0.216	1141	0.423	1387	0.651	1600	0.895	1790	1.152	1963	1.420	2124	1.702	2274	1.992	2415	2.291	2549	2.600
1000	1510	883	0.289	1165	0.531	1400	0.794	1605	1.072	1790	1.365	1959	1.668	2117	1.986	2264	2.310	2404	2.648	2536	2.992
1200	1810	937	0.381	1200	0.657	1423	0.954	1621	1.268	1800	1.596	1965	1.936	2119	2.288	2263	2.648	2400	3.020	2530	3.400
1400	2110	1000	0.496	1245	0.806	1456	1.137	1646	1.487	1819	1.850	1979	2.225	2128	2.609	2270	3.008	2404	3.415	2531	3.828
1600	2415	1070	0.638	1298	0.982	1498	1.348	1679	1.731	1845	2.127	2000	2.537	2146	2.960	2283	3.390	2414	3.832	2539	4.282
1800	2715	1145	0.812	1357	1.188	1546	1.587	1719	2.004	1879	2.436	2029	2.882	2170	3.338	2304	3.805	2432	4.283		
2000	3020	1224	1.021	1422	1.430	1601	1.863	1766	2.314	1919	2.778	2064	3.259	2200	3.747	2330	4.248	2455	4.763		
2200	3320	1307	1.271	1491	1.710	1661	2.177	1818	2.660	1965	3.159	2104	3.671	2237	4.199	2363	4.734	2484	5.281		
2400	3620			1565	2.035	1725	2.532	1875	3.049	2016	3.581	2150	4.127	2278	4.687	2401	5.261	2518	5.838		
2600	3920			1641	2.404	1793	2.935	1936	3.484	2072	4.052	2201	4.632	2325	5.227	2443	5.829				
2800	4225			1720	2.825	1865	3.390	2001	3.970	2131	4.568	2256	5.185	2375	5.810	2490	6.449				
3000	4525			1802	3.303	1939	3.897	2070	4.514	2195	5.146	2314	5.789	2430	6.453	2541	7.124				
3200	4825			1885	3.836	2016	4.464	2141	5.112	2261	5.777	2377	6.460	2488	7.151						

### MODEL CMV 280

#### Mechanical Specifications

Wheel diameter	17.72"
Tip speed	rpm x 4.638 = ft/min.
Maximum rpm	2550
Inlet/outlet diameter	11.02" I.D.
Inlet/outlet area	0.663 ft <sup>2</sup>
Fan weight (w/o motor)	57 lb.



### Dimensions (inches) Direct Drive/Belt Driven

CMV	A	B	C	D	E	F	G	H	I	K	L	M	O	P	Q	R	S
125	6.75	9.5	6.5	8	6	9	10.75	11	9	8.25	18	8	2.13	4.38	.75	.31	5
140	7.5	10.5	7.13	8.75	6.5	9.63	11.5	11.88	10	8.5	18.25	8.25	2.25	4.63	.75	.31	5.5
160	8.38	11.75	8.13	10	7	10.25	12.75	13.13	11	8.88	18.63	8.25	2.25	4.88	.75	.38	6.25
180	9.25	13.25	9	11	7.88	11.25	14	14.75	12.5	8.88	19.75	8.625	2.875	5.5	.75	.38	7
200	10.75	14.5	10	12.25	8.63	12.38	15.63	15.75	13.75	10.5	21.75	10.25	3.25	6.25	.75	.38	7.88
225	11.38	16.25	11.25	13.63	9.5	13.38	17.63	17.75	15.38	11.5	25.13	10.75	3.63	7.13	1.25	.5	8.88
250	12.5	17.88	12.5	15	10.5	14.5	19.5	19.63	17.13	11.5	29	10.75	4.13	7.88	1.25	.5	9.88
280	13.75	19.75	13.63	16.5	11.5	16	21.5	22	19	11.63	26	11.25	4.5	8.88	1.25	.5	11
315	15.5	22.25	15.63	18.63	13	17.75	24.13	24.88	21.5	13.25	26.5	12.75	5.25	9.88	1.25	.5	12.5
400	17.5	25.75	17.38	21.25	14.5	18.5	27	28	24.38	14.5	31.38	14.25	6.38	12.38	1.25	.5	15.75



Industrial Plastic Fan

134 Water Street Wakefield, MA 01880 USA t. 781.246.9444 f. 781.246.9423 www.ipfcolasit.com